



Print & Web Update@TAPROGGE from September 01, 2003: www.taprogge.de

Hardly are the celebrations of TAPROGGE's 50th company anniversary over, when there is further important news. The people who had discovered the new logo sensed that there was also something else going on – which is now being officially announced. By the integration of the TAPROGGE products and services into the integral, new concept – under the name of **IN-TA-CT®** and **IN-TA-S®** – numerous innovations have been brought about all of which serve but one goal: to increase the efficiency of our clients' plants and processes.

And he who offers so many new things would like to announce them. In parallel to the contents of the concepts, also

the appearance in the media has been revised. By a completely new brochure portfolio and an updated internet appearance, TAPROGGE intends to show to the outside what is happening inside.

Catchword internet.

Under www.taprogge.de the updated internet appearance is launched on September 01, 2003. This website presents **IN-TA-CT®** and **IN-TA-S®** in a comprehensive way.

Menu-guided, any information about the company in general, about its concepts, products and wide-spread range of services is being presented.

Visit us – you are welcome!

(PK)



Be it in power stations, seawater desalination at TAPROGGE everything is IN-TA-CT®

Everything? No! There are some things that are **IN-TA-S®**. — What **IN-TA-CT®** and **IN-TA-S®** stand for and in which way our clients and operators profit by it, that's what our short look back into the company history and our outlook on TAPROGGE's future deal with.

Everything started with Mr Josef Taprogge's idea to automate the unpleasant cleaning of condenser tubes at the power station of Essen-Kupferdreh. Whereas earlier, the condensers had to be shut down and then cleaned, tube by tube, by means of long brushes — which was hard and tiring work, his idea and the process that finally resulted thereof consisted in leaving this work to sponge rubber balls. Not now and then during a power station shut-down, but continuously, on load, during power station operation - fantastic and revolutionary!

It was obvious that this process was first applied in a power station because among the heat exchangers it is the condensers that have the greatest number of tubes and thereby yield the greatest thermal benefit in absolute terms. That the process was applicable for other tubular heat exchangers as well was known, however, but the direct demand was coming from the power station sector.

Thanks to this idea the company developed quickly, and the first idea was soon joined by another one:

Particularly in power stations with seawater cooling, there were sometimes problems with the ball circulation. Mussels and other seaborne organisms blocked the cooling water intakes thereby hindering the circulation of sponge rubber balls. The solution: a mussel filter installed as closely as possible to the condenser inlet.

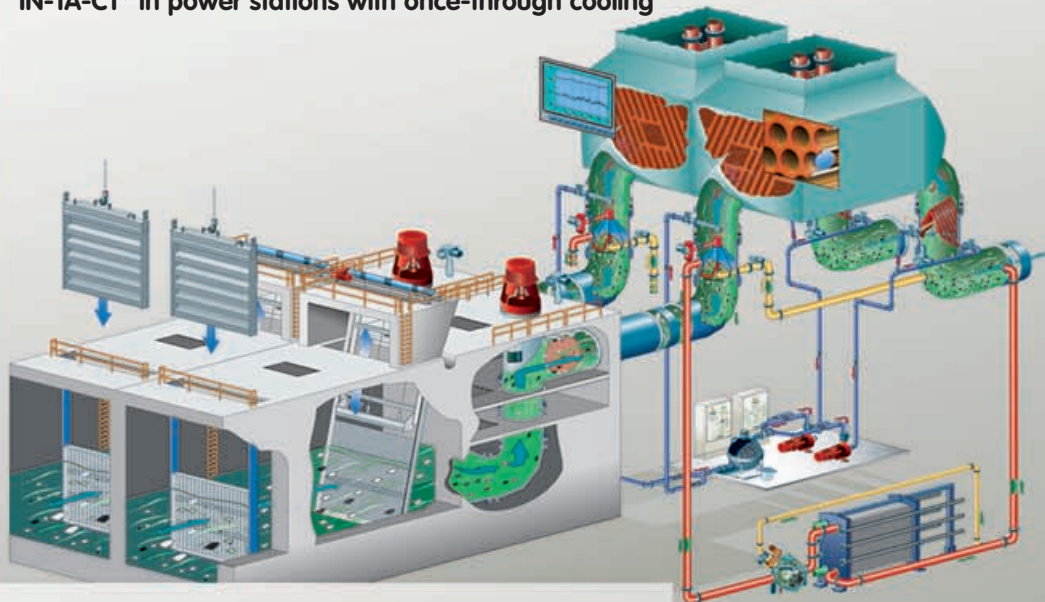
Thereby not only condenser clogging was avoided but the ball circulation secured as well. And tube cleaning was supported by a second standing leg — cooling water filtration.

In addition to the power station sector, further fields of application were opened up to the TAPROGGE System. Seawater desalination with its batteries of evaporators soon became a regular customer. Industrial applications — which means users who have little to do with the power station sector but operate turbines that in turn drive compressors to comply with the requirements of chemical processes — also very interested clients of TAPROGGE Systems. However, every user had his specific problem, even though they all had one thing in common, the utilization of water for cooling and other purposes.

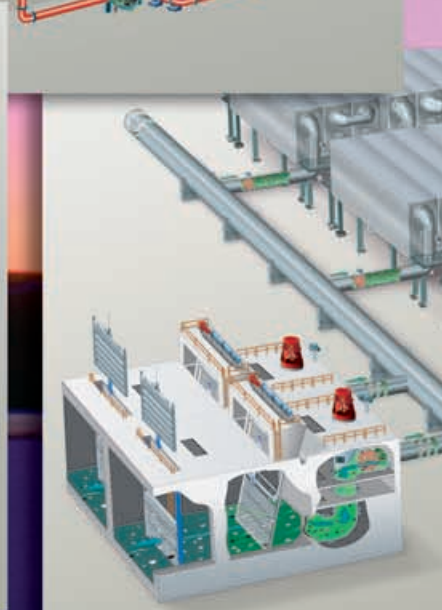
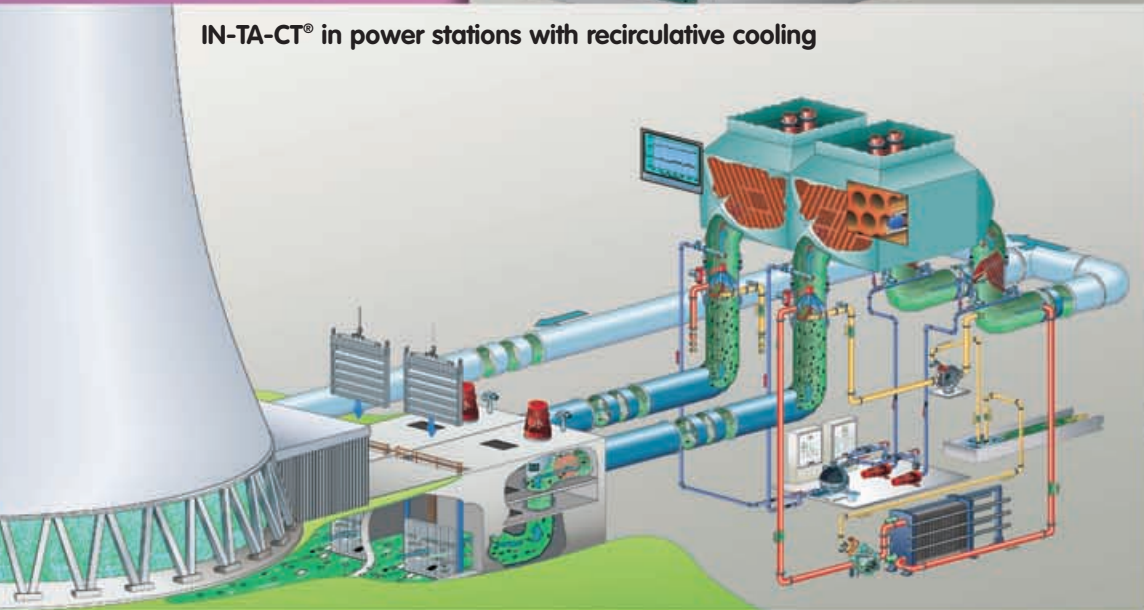
The genuine breakthrough of TAPROGGE, out of the shadow of the "one-product — one-market company", was realized by the development of high-performance filtration. The discovery that synergies are achievable by the clever combination of the modules 'water extraction' — 'filtration' — 'cleaning' resulted in drastic economies by the planning of entire water circuits optimized in terms of needs and cost.

This step to consider water systems not from the viewpoint of a component supplier but as an integral concept was the hour of birth of **IN-TA-CT®** — the Integrated TAPROGGE Concept.

IN-TA-CT® in power stations with once-through cooling

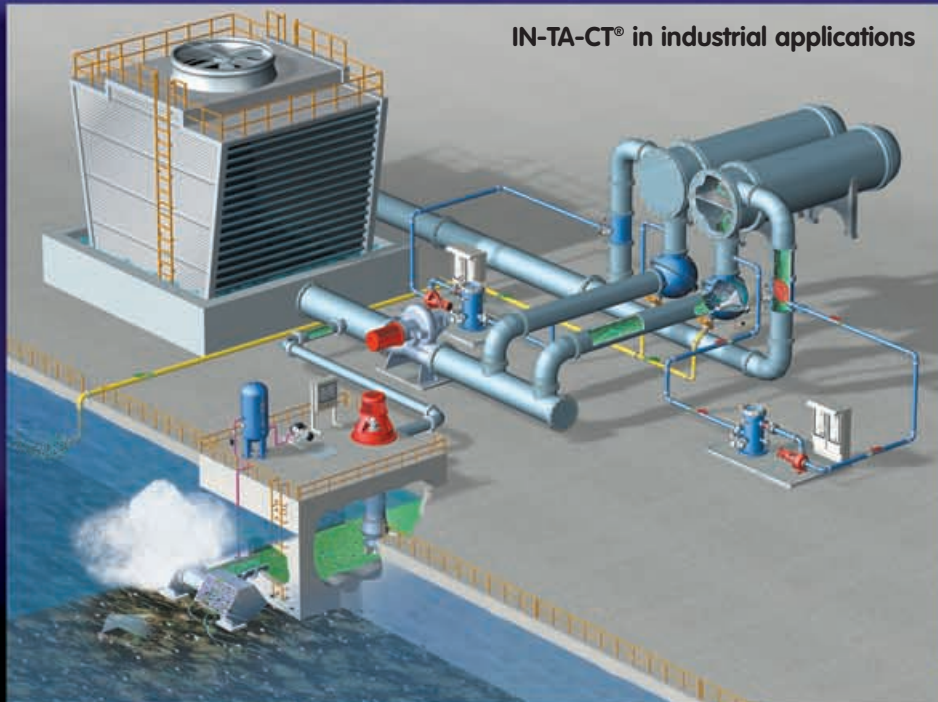


IN-TA-CT® in power stations with recirculative cooling



n or industry –

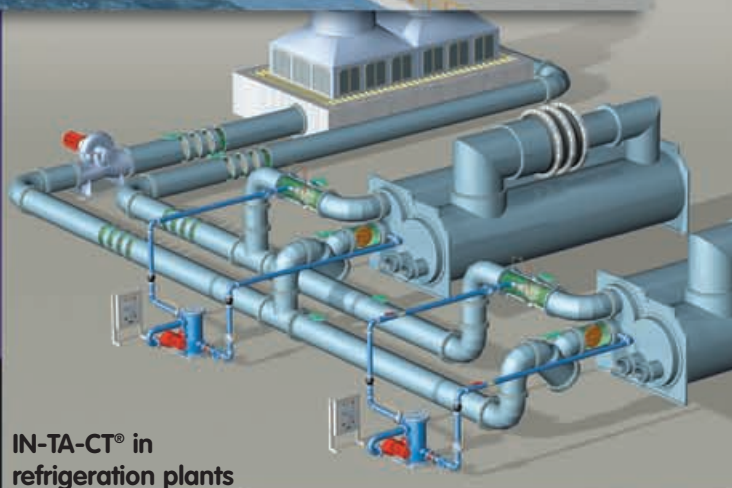
IN-TA-CT® in industrial applications



IN-TA-CT® is an integral concept and avoids unpleasant interface problems – which was a typical difficulty in the past caused by single component supplies not harmonized to each other. In this way, **IN-TA-CT®** offers additional process safety to the user, at the same time avoiding on-going maintenance and other charges due to TAPROGGE's guarantee as an integral system supplier. And besides, **IN-TA-CT®** primarily offers the chance to realise huge economies in terms of capital cost.

IN-TA-CT® comprises the part of system engineering mainly architect engineers, contractors and purchasers profit by. But what about the operators of **IN-TA-CT®**? They are taken care of by **IN-TA-S®**, the Integrated TAPROGGE Services that yields the optimum of the operation of **IN-TA-CT®**. Be it questions dealing with the appropriate type of cleaning ball, remote monitoring of all of the **IN-TA-CT®**

modules, condenser monitoring or spare parts management – all this and much more is answered by **IN-TA-S®**. Like **IN-TA-CT®**, **IN-TA-S®** is an all-embracing care covering the users' requirements for the lifetime of the total modular **IN-TA-CT®** chain. The globe-wide network of **IN-TA-S®** centres with TAPROGGE experts creates a service density that offers the safety of the TAPROGGE care even to the most distant user. (MMH)



IN-TA-CT® in refrigeration plants



IN-TA-CT® in membrane plants



IN-TA-CT® in seawater desalination plants



IN-TA-CT® and IN-TA-S® in Detail

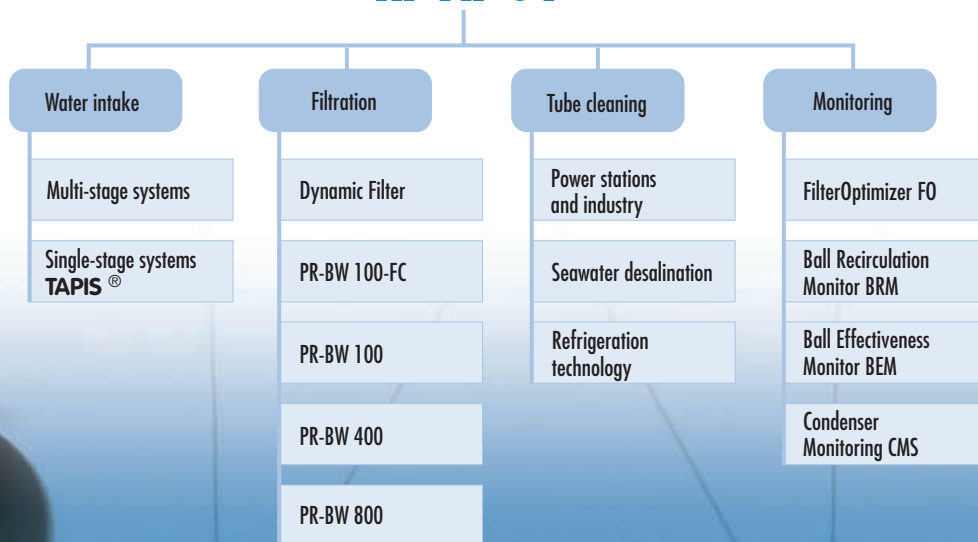
With its "Integrated TAPROGGE Concept" and the "Integrated TAPROGGE Services" TAPROGGE is applying a new concept.

While **IN-TA-CT®** addresses the needs of architect engineers and contractors, **IN-TA-S®** takes care of the users. **IN-TA-CT®** and **IN-TA-S®** are ideally harmonized to each other

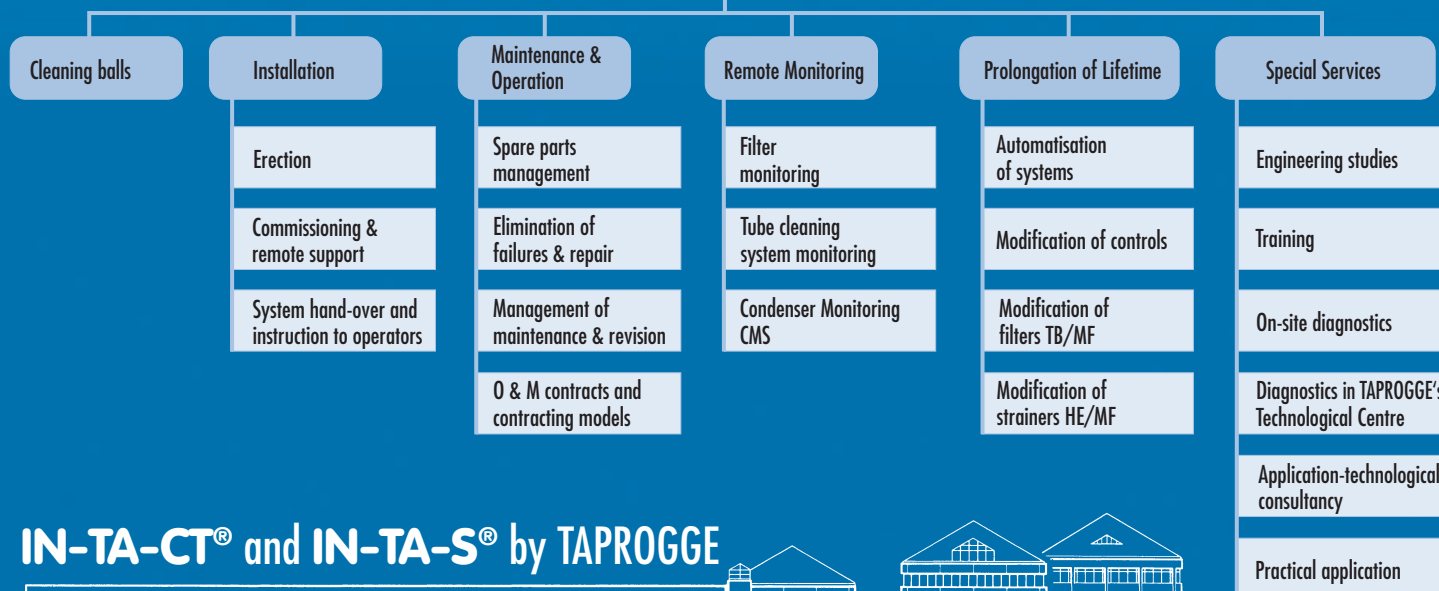
because they are coming from a single source. Their modular structure enables planning to be optimized in terms of needs and cost. Additionally **IN-TA-CT®** offers

maximum process safety without interface problems. The use of both systems safeguards maximum efficiency and availability. (PK)

IN-TA-CT®



IN-TA-S®



IN-TA-CT® and IN-TA-S® by TAPROGGE



Imprint

Publisher: TAPROGGE Gesellschaft mbH · Schliemannstraße 2–14 · D-58300 Wetter · Telefon (02335) 7 62-0 · Telefax (02335) 7 62-245 · www.taprogge.de · E-Mail info@taprogge.de
Editorial Staff Mogens M. Heimerzheim, Oswald Göller, Peter Krüger, Sabine Padeck, **Layout and Production:** Grafisches Zentrum Dortmund, Edited: August 2003